

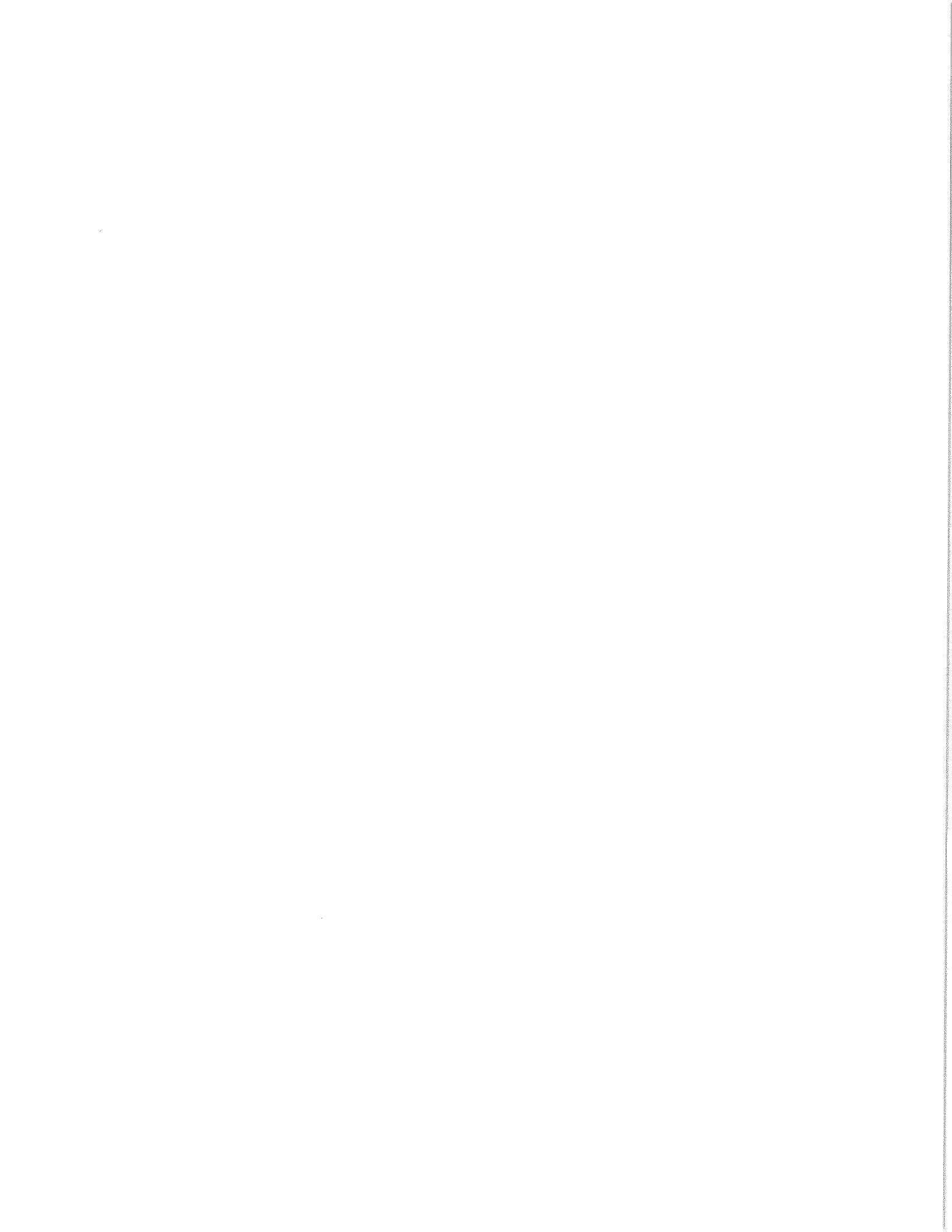
Junior Summer To-do List

- Research Universities (Goal 5-10 School)
 - Check out IHS Counseling Website for resources
- College Visit/Open House
- Retake ACT/SAT if needed
- Potential College Athletes NCAA and NAIA
- Start Building/Updating your list of activities & achievements
- Start College Application Aug 1, 2023

If Time.....

- Consider-Letter of Recommendations and complete form
- Scholarships-Competitive-Merit-MI Student Aid-Others

Have a Fun Summer!



Class of 2024

IHS Application Info

HIGH SCHOOL INFORMATION

High School Name	Ida High School
High School Address	3145 Prairie St. Ida, MI 48140
CEEB Code (School Code)	232-065
Graduation Date	6/2/2024
Graduating Class Size	100

COUNSELOR INFORMATION

Counselor Name	Mrs. Kelly Riley
Counselor Job Title	School Counselor
Counselor Email	riley@idaschools.org
Counselor Phone	734-269-9003 Ext 1506

COURSES & GRADES

GPA Scale	4.0
GPA Weighting	Unweighted
Class Rank Reporting	Exact and Unweighted
Course Scheduling System	Semester

MISC INFO

Start	Fall of 2024
Type of Student	First Year Student (even if you dual enrolled)
Degree Type	Undergraduate

Unofficial Transcript- a transcript that a student can easily access. **Infinite Campus**
Official Transcripts- Sent from the school directly. E-mail Mrs. Nowak nowak@idaschools.org

Curriculum Questions

Honors Classes Offered at Ida High School

Honors English 1, Honors English II, Honors English III, Honors English IV

Honors Biology, Honors Chemistry, Physics II, Anatomy and Physiology

Honors Geometry, Pre-Calculus, Calculus

Not Offered at Ida AP Courses or International Baccalaureate (IB) Courses

Testing Information and Terms

2022 Average SAT Scores: Michigan 959 Monroe County 951 Ida High School 1005

Test Optional-Standardized test scores are considered if the applicant decides to submit their SAT or ACT® scores as part of their application. It doesn't mean that schools aren't interested in seeing all applicants' test scores—but if a student doesn't submit their scores, it won't be counted against them in the application review.

Test Flexible- Student who do not want their SAT or ACT scores considered as part of their application can submit other optional forms of testing, such as AP and IB Exam Scores.

Test Blind- Standardized test scores are not considered as a part of the application evaluation.

Test Ignored- Standardized test scores are ignored if they are received.

Super Scoring- When a college takes the best scores from each section of a standardized test which eventually makes up a new composite score.

Important Terms

Regular decision (RD)

An application process in which you apply by a specific date and then receive an admission decision within a stated period of time.

Rolling admission

A decision plan that lets students submit an application at any time throughout the year. Colleges will review applications as they receive them, and make admission decisions throughout the year.

Early action (EA)

An application process to apply and receive a decision earlier than the regular decision notification date. Unlike early decision (ED), EA is "non-binding" and you have no obligation to enroll and will have until May 1 to consider the offer and confirm your enrollment.

Early decision (ED)

A "binding" application process by which you commit to enrolling in a certain college if you're admitted. You can apply to other colleges, but only apply ED to 1 college. If admitted, you must withdraw your other applications.

Fee waivers

A request to the college to remove the application fee. Using either the Common App fee waiver, which your counselor must confirm, or a college-specific fee waiver, you will not be required to pay the fee to submit your application.

FERPA

The Family Educational Rights and Privacy Act is a federal law that protects your education records. To learn more, visit the U.S. Department of Education.

Common Application Info

Application Opens Aug 1, 2023

Early Action Deadline Nov 1, 2023 for many universities

Goals to Consider

Oct 1st-Request Outside Requirements (Recommenders, Test Scores, MCCC Transcripts)

Oct 18th-Application and Essays Complete

Common Application Essay Prompts for 2023-2024

Below is the full set of essay prompts for 2023-2024.

1. Some students have a background, identity, interest, or talent that is so meaningful they believe their application would be incomplete without it. If this sounds like you, then please share your story.
2. The lessons we take from obstacles we encounter can be fundamental to later success. Recount a time when you faced a challenge, setback, or failure. How did it affect you, and what did you learn from the experience?
3. Reflect on a time when you questioned or challenged a belief or idea. What prompted your thinking? What was the outcome?
4. Reflect on something that someone has done for you that has made you happy or thankful in a surprising way. How has this gratitude affected or motivated you?
5. Discuss an accomplishment, event, or realization that sparked a period of personal growth and a new understanding of yourself or others.
6. Describe a topic, idea, or concept you find so engaging that it makes you lose all track of time. Why does it captivate you? What or who do you turn to when you want to learn more?
7. Share an essay on any topic of your choice. It can be one you've already written, one that responds to a different prompt, or one of your own design.

We will retain the optional community disruption question within the Writing section. Additionally, we are closely following the Supreme Court case on the use of race in admissions. Depending on the outcome, we stand ready to create resources that will help students speak about their lived experiences.

Michigan College Average Requirements Worksheet

Name: _____

Approximate GPA: _____ SAT Score: _____

GPA and SAT averages of each college's freshman class were found on institutions' websites. Information was verified with admissions offices in most cases. Ranges represent the middle 50% of students—25% of admitted students fell above the range listed, 25% fell below.

Open Admissions	Avg. GPA 2.8-3.3	Avg. GPA 3.3 -3.5	Avg. GPA 3.5-3.8	Avg. GPA 3.8-4.0
	Avg. SAT 940-1120	Avg. SAT 1060-1230	Avg. SAT 1130-1380	Avg. SAT 1350-1600
Baker College <i>Community Colleges: No minimum GPA or SAT required for admission</i> Alpena CC Bay College Delta College Glen Oaks CC Gogebic CC Grand Rapids CC Henry Ford CC Jackson CC Kalamazoo Valley CC Kellogg CC Kirtland CC Lake Michigan College Lansing CC Macomb CC Mid-Michigan College Monroe County CC Mott CC Muskegon CC North Central Michigan College Northwestern Michigan College Oakland CC Schoolcraft College Southwestern Michigan College St. Clair County CC Washtenaw CC Wayne County CC West Shore CC	Adrian College Davenport University Ferris State University Finlandia University Kendall College of Art and Design Lake Superior State University Madonna University Northern Michigan University Northwood University Olivet College Rochester College Saginaw Valley State University Siena Heights University Spring Arbor University	Albion College Alma College Andrews University Aquinas College Central Michigan University College for Creative Studies Concordia University Cornerstone University Eastern Michigan University Lawrence Tech Oakland University UM-Flint Western Michigan University Wayne State University	Calvin University Grand Valley State University Hope College Kalamazoo College Michigan State University Michigan Tech UM-Dearborn University of Detroit Mercy	Hillsdale College University of Michigan

Campus Visit Checklist

Visiting a college campus helps you get a sense of what a college — and life at that college — is like. This can help you decide whether the college is right for you.

GATHER INFORMATION

Find out what you need to do to apply, and see if the college's class and major offerings are what you want:

- Take part in a group information session at the admission office.
- Interview with an admission officer.
- Pick up financial aid forms.
- Sit in on a class that interests you. If classes aren't in session, just see what the classrooms are like.
- Meet a professor who teaches a subject that interests you.
- Talk to students about what they think of their classes and professors.
- Get the names and business cards of the people you meet so you can contact them later if you have questions.

EXPLORE THE CAMPUS

Get a feel for student life, and see if this college is a place where you will do well:

- Take a campus tour.
- Visit the dining hall, fitness center, library, career center, bookstore, and other campus facilities.
- Talk to current students about the college and life on campus.
- Check out the freshman dorms, and stay overnight with a student, if possible.
- Talk to the coaches of sports that you may want to play.
- Walk or drive around the community surrounding the campus.

CHECK OUT CAMPUS MEDIA

Tune in to learn what's happening on campus and what's on students' minds:

- Listen to the college radio station.
- Read the student newspaper.
- Scan bulletin boards to see what daily student life is like.
- Go to the career center and learn what services it offers.
- Browse the school's website and any campus blogs.
- Read other student publications, such as department newsletters, alternative newspapers, and literary reviews.

GET THE MOST OUT OF A CAMPUS VISIT IN **6 STEPS**

1 DECIDE WHERE AND HOW

See if your school arranges group trips to colleges or if you could get a group of friends together and visit the campus. A family trip is another option and allows you to involve your family in the process.

2 PREPARE FOR YOUR VISIT

Before you set out, get a map of the college campus and pick out places of interest. Call the college's admission office to schedule a guided tour of the campus.

3 TAKE YOUR OWN TOUR

Just wandering around the campus on your own or with friends can be the best way to get a feel for what a college is like.

4 EXPLORE THE FACILITIES

Find the spots on campus where students gather or ask a student where the best place to eat is to get a feel for the character of the college. Visit the library and check out the gym or theater. Ask an admission officer if you can tour a dorm and a classroom.

5 MAKE CONNECTIONS

Talk to current students. Ask the students at the next table or sitting nearby what they like best about the college.

6 TAKE NOTES

During your visit, write down some notes about your experience. What did you see that excited you? Are there aspects of the college that you don't like? If so, what are they?

Questions to Ask During Your Visit:

ASK TOUR GUIDES/STUDENTS

- What are the best reasons to go to this college?
- What's it like to go from high school to college?
- What do you do in your free time? On the weekends?
- What do you love about this college?
- What do you wish you could change about this college?
- Why did you choose this college?
- What is it like to live here?
- What does the college do to promote student involvement in campus groups, extracurricular activities, or volunteerism?

ASK PROFESSORS

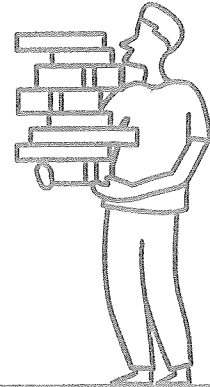
- What are the best reasons to go to this college?
- Can a student be mentored by professors, graduate students, or upperclassmen?
- How are professors rated by the college? Does the college think mentoring and meetings for project guidance are important?
- How does the college help students have access to professors outside class? Do professors join students for lunch, help with community service groups, or guide student organizations?
- How many students do research or other kinds of projects for a semester or more?

ASK THE FINANCIAL AID OFFICE

- How much has your total college cost for each student risen in the past year?
- How much do your students usually end up owing when they graduate?
- What is the average income of graduates who had the same major that interests me?
- Will my costs go up when your tuition goes up, or can we use the same tuition rate I started with so I'll know the costs for four years?
- How many students usually graduate in the major that interests me? How long do these students usually take to get their degree? In what ways does the college help students graduate in four years?

Gather your materials

Use this checklist to help you gather the information you'll need as you fill out your Common App.



High school information

You'll need to know things like your high school's CEEB code, GPA scale, and class rank reporting. Check in with your counselor for more details about this information. Ask them for the High School Details information sheet! (Download it at commonapp.org/ready)

An unofficial copy of your high school transcript

You'll be asked to list the courses you're taking this academic year.

Some colleges ask applicants to self report their full academic record in the Courses & Grades section. If you have a college on your list that requires Courses & Grades, you'll need your transcript to complete this section.

A copy of your test scores and dates

You have the option to enter scores for standardized exams like the ACT and SAT that you have taken and/or plan to take. Don't forget, you'll still need to send official score reports to colleges that require them.

Citizenship information

Social Security Number, if you intend to apply for financial aid via FAFSA (For U.S. citizens, U.S. nationals, U.S. dual citizens, U.S. permanent residents, U.S. refugees, and U.S. asylees).

For Permanent Residents: A copy of your green card.

For non-U.S. citizens: U.S. visa type, number, and date issued. If you do not yet have a U.S. visa but intend to apply for one, you can indicate that in the application.

State of residence information

If you think you qualify for in-state tuition for a school you might be asked to share more information about your residence in that state.



Parent information

You'll be asked to share some basic information about one or more parents, including your parent's occupation and job title, and the education level they received. If your parent attended college, you'll need to know the name and location of the college they attended, as well as what degree they received and when.

Parent information

- Occupation
- Job title
- Education level
- Name of college(s) attended
- College location
- Degree earned
- Year degree earned

A list of academic honors

You can include up to 5 academic honors you received during high school. You'll need to include the honor's title, when you received it, and the level of recognition you received (regional or national, for example).

A list of your activities

You have the option to enter up to 10 activities you participated in during high school. These activities might include family responsibilities, jobs, volunteer work, clubs, sports, hobbies, and more.

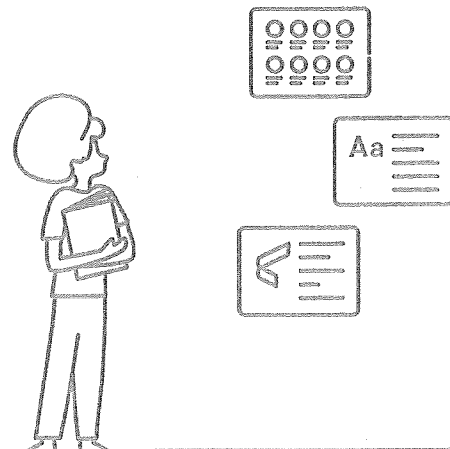
For each activity you'll list: the years of participation, hours per week and weeks per year spent on the activity, position/leadership held, and a brief description.

.....

Use this space to jot down a few activities you want to report in your application.

How the first-year Common App works

A quickstart guide for students using
the first-year Common App.



1 Add colleges

Get started by adding colleges to your list. You can find colleges to apply to in the College Search tab of your Common App account. The College Search tab also has information and links to help you research each college. More than 1,000 colleges use Common App! Go to commonapp.org/explore to start exploring.

2 Stay organized

Each college has its own set of specific requirements and supplements. When it comes to tracking this information and staying organized, we're here to help! Use the "Requirements Grid" and each college's "College Information" page to find this information.

To start your college application checklist, check out our "My College Requirements" worksheet at commonapp.org/ready.

3 Complete and submit

Answering all the questions in the Common App tab is a great way to start your applications. For each college you will:

- Answer college specific questions
- Invite and manage recommenders
- Complete other supplements (if applicable)

After all these sections are complete, you are ready to submit your application! Submission is simple: review, pay (if applicable), and submit.

How does my application get there?

When you submit we combine your responses from the Common App and college specific questions, as well as any supplements, into one form. Your counselor, teachers, and other recommenders complete their reports and evaluations separately.

As recommenders submit their forms, they will be sent to the college to be added to your application.



MICHIGAN ACHIEVEMENT SCHOLARSHIP



Starting with the high school class of 2023, students will be eligible for more financial aid from the State of Michigan.

Eligible Training Provider	→	Up to \$2,000, per year, for two years
Community/Tribal Colleges	→	Up to \$2,750, per year, for three years
Independent Colleges and Universities	→	Up to \$4,000, per year, for five years.
Public Universities	→	Up to \$5,500, per year, for five years.

Eligibility Requirements

- File a Free Application for Federal Student Aid (FAFSA).
- Earn a high school diploma or certificate of completion in 2023 or later in Michigan.
- Have an Estimated Family Contribution (EFC) of \$25,000 or less according to the FAFSA.
- Enroll full-time at an eligible Michigan institution within 15 months of completing high school.

Visit michigan.gov/achievement for full program details.

MI Student Aid

P.O. Box 30462
Lansing, MI 48909-7962

1-888-447-2687
michigan.gov/mistudentaid



@mistudentaid



The Michigan Department of Treasury is not affiliated with National Merit Scholarship Corporation or its registered trademarks National Achievement®, Achievement Scholarship®, or Achievement Scholar®.

2022-2023 UPDATES

APPLICATION DEADLINES

TEST REQUIREMENTS

SCHOLARSHIPS

CAMPUS VISITS

OTHER INFO

	APPLICATION DEADLINES	TEST REQUIREMENTS	SCHOLARSHIPS	CAMPUS VISITS	OTHER INFO
CENTRAL MICHIGAN	Rolling admissions. Scholarship priority deadline is Dec 1. Awards are available after Dec 1 based on availability of funds	Test optional for all 2023 terms	Merit and Competitive Scholarships - cmich.edu/scholarships	All campus visits and events can be found at cmich.edu/visit	cmich.edu/about/covid-19-information-and-resources
EASTERN MICHIGAN	Rolling admissions	Test optional for all 2023 terms	Visit emich.edu/scholarships for full information	Campus visits and Open Houses available at emich.edu/visit	emich.edu/covid
FERRIS	Rolling admissions	Test optional for all 2023 terms	ferris.edu/wmf	Campus visits are available! Visit ferris.edu/visit to register	ferris.edu/RTMIS/news/coronavirus/homepage.htm
GRAND VALLEY	A student admitted by March 1 may submit updated documents for scholarship consideration until July 31	Test optional for all 2023 terms	gvsu.edu/financialaid/coming-freshman-merit-scholarships-2023-2024-2434.htm	gvsu.edu/admissions/undergraduate-campus-visit-20.htm	gvsu.edu/akeragether/
LAKESUPERIOR STATE	Rolling admissions; no deadline	Test blind for all terms	lssu.edu/financial-aid	Campus visits are available M-F with no restrictions. Visit lssu.edu/visit to sign up.	lssu.edu/coronavirus-19-response
MICHIGAN STATE	Early Action: Nov 1- Regular: Feb 1- Rolling admission after Feb 1	Test optional	Students who choose to apply without a test score will be eligible for scholarships based on high school performance and a holistic review of their application material.	In-person and virtual hours are available. Visit admissions.msu.edu/visit to register	msu.edu/together-we-will
MICHIGAN TECH	Rolling admission; no deadline	Test optional for those with a cumulative GPA of 3.0+	Test scores are not required but recommended for scholarship consideration	Campus visits are fully operational. mtu.edu/visit	mtu.edu/flex
NORTHERN MICHIGAN	Rolling admissions; no deadline	Test free	Scholarships are based on GPA. See nmu.edu/scholarships for details.	Campus visits are offered in-person and virtually. nmu.edu/visit	nmu.edu/covid
OAKLAND	Rolling admissions; rolling extended deadline for applications: Fall: Aug 1- Winter: Dec 1- Summer: July 1	Test optional; test score with a cumulative GPA of 2.5+	Talented Student Award, Academic Achievement Award, and University Recognition Award are available to those without test scores. Visit oakland.edu/scholarships for details	Campus visits including tours and events are available in-person and virtually for all opportunities. Visit oakland.edu/visit	oakland.edu/return-to-campus
SAGINAW VALLEY	Rolling admissions; no deadline	Test optional permanently	Scholarships are based on GPA. Visit svsu.edu for details.	In-person campus visits are available M-F with Saturday events throughout the year. Make a reservation at svsu.edu	svsu.edu/coronavirus
U-M ANN ARBOR	All required items for Early Action must be received by Nov 1; decisions will be released no later than the end of Jan 2023	Students who do not wish to have SAT or ACT scores considered as part of their application review can still submit other forms of testing (i.e. AP or IB exam scores) and these scores may be self-reported. Students who initially submit test scores can retract scores once they are submitted.	financial.umich.edu/types-aid/scholarships	In-person campus tours are available; registration is required. Visit admissions.umich.edu/explore-visit for availability	campusblueprint.umich.edu
U-M DEARBORN	Admissions and FRSA priority deadline: Dec 1; Admission app deadline: April 1	Test optional for all 2023 terms	Test scores are not utilized in determining scholarships. umdearborn.edu/financial-aid/types-aid/scholarships/freshman-scholarships	Campus visits, including tours and events, are now available for all opportunities. Visit umdearborn.edu/visit	umdearborn.edu/coronavirus
U-M FLINT	Rolling admissions; no deadline	Test optional	SAT and/or ACT test scores are recommended. However, students admitted without test scores will also be considered for scholarships. umdearborn.edu/go-blue-guarantee	In-person campus hours are available most weekdays. To register, visit: umflint.edu/admissions/visits-events/campus-hours	umflint.edu/covid-19
WAYNE STATE	Rolling admissions; Admissions app deadline: Aug 1; Priority scholarship deadline: Dec 1; Final scholarship deadline: Feb 1	Test optional for all 2023 terms	Test optional applicants are eligible for merit scholarships. wayne.edu/scholarships . Merit scholarship information will be available in October 2022	In-person campus hours are available; visit wayne.edu/tour	wayne.edu/coronavirus
WESTERN MICHIGAN	Early Action: Dec 15 (scholarship-eligibility, priority invitation to the Lee Honors College, and consideration for Aviation Flight Science and direct admit Nursing); Rolling admission: June 1 (consideration for all other WMU	Test optional (tests only used if it benefits the student)	Test free for all scholarships. wmich.edu/admissions/scholarships/firstyearscholarships	Campus Visit offered M-F and many Sat. on-campus admissions events scheduled several times each semester. Visit wmich.edu/admissions/visit	wmich.edu/admissions/covid-19

APPLICATION PROCESS, DATES, & COSTS

SCHOOL	TEST SCORES REQUIRED	TEST SCORE SUBMISSION	APPLICATION DEADLINE	ADMISSION DECISION / RELEASE DATES	APP FEE	FEE WAIVERS
CENTRAL MICHIGAN	Test optional for all of 2023; ACT/SAT accepted	Official scores from testing agency or official high school transcript, or provided by high school counselor on unofficial copy from testing agency portal located from the front	Rolling admission, priority deadline for scholarships: Dec 1	Rolling admission	\$40	Yes, federal guidelines; NACAC, College Board, college counselor letters and hardship case letters accepted
EASTERN MICHIGAN	Test optional; ACT/SAT accepted	Official from testing agency or official high school report (includes an official transcript)	Priority 1 deadline: July 1	Rolling admission	\$35	Yes, federal guidelines; NACAC, College Board, college counselor letters and hardship case letters accepted
FERRIS	Test optional; ACT/SAT accepted	Official from testing agency, official high school transcript, or official test from counseling office	Rolling application	Rolling admission	Free	N/A
GRAND VALLEY	Test optional	Official from testing agency, official high school transcript, or official test from counseling office	90 days prior to the start of semester; March 1 for early testing consideration for the following fall	Rolling admission; 2-3 weeks after application complete	None	Not needed; no application fee
LAKE SUPERIOR STATE	Test blind	Official from testing agency or official high school transcript	Rolling application	Rolling admission	Free	N/A
MICHIGAN STATE	Test optional	Self-reported, official required for admitted students who intend to enroll	Early Action: Nov 1; Regular: Feb 1; Rolling Admission After Feb 1	Early Action: Jan 15; Regular: May 31; Rolling	\$85 domestic; \$75 int	Yes, federal guidelines; NACAC, College Board, college counselor letters and hardship case letters accepted
MICHIGAN TECH	No test scores required for those with a GPA of 3.0+	Official from testing agency, official high school transcript, or provided by counselor on Michigan Tech's Counselor Information Page	Rolling admission, recommended Nov 1 for Leading Scholar Scholarship, otherwise Jan 15	Rolling admission beginning in mid-June	None	N/A
NORTHERN MICHIGAN	Test free	Official from testing agency or official high school transcript (not considered for admission or scholarships)	Rolling admission - no application deadline except for Presidential Scholars Competition Oct 15, 24, & 31 (depending on room/dorm selected)	Rolling admission	\$35	Yes, federal guidelines; NACAC, College Board, MAU form
OAKLAND	No test scores required for those with a 3.0+ GPA	Official from testing agency or official high school transcript	Rolling admission; recommended Nov 1 for Presidential Scholarship, otherwise Jan 15	Rolling admission	None	N/A
SAGINAW VALLEY	Test optional	Official from testing agency or official high school transcript	No submission deadline; Dec 1 for President's Scholarship consideration	Rolling admission	None	N/A
U-M ANN ARBOR	Test flexible	Self-reported on application, official required from testing agency for admitted students who intend to enroll	Early Action: Nov 1; Regular Decision: Feb 1	Early Action: end of June; Regular: end of October; Early April	\$75	Yes, federal guidelines; NACAC, College Board, college counselor letters and hardship case letters accepted
U-M DEARBORN	Test optional	Official from testing agency or on official transcript	Admission and FAFSA priority filing date: Dec 1; Admission app deadline: April 1	Dec 15, rolling thereafter	None	N/A
U-M FLINT	Test optional	Official from testing agency or official high school transcript	No submission deadline; from Dec 1st to when scholarship board 1	Rolling admission	None	N/A
WAYNE STATE	Test optional	Official from testing agency or official high school transcript	Fall: Aug 1, Winter: Dec 1; Spring: Summer: April 1	Rolling admission	\$25	Yes, federal guidelines; NACAC, College Board, college counselor letters and hardship case letters accepted
WESTERN MICHIGAN	Test optional	Self-reported on application, Enrolling students encouraged to submit official scores before orientation to assist with advising process.	Fall: Early Action scholarships and all academic programs: 12/15; Rolling admission: 6/1, Spring: 1/1; Summer: 8: 1/1; Summer II: 8: 15	September, rolling thereafter for most programs. Winter: 1/15; Spring: 4/15; Summer: 8/15; Summer II: 8/15	\$40	Yes, encourage using fee waiver process on Common App, NACAC, College Board, ACT, and college counselor letters and hardship cases accepted.

COSTS & AID

SCHOOL	IN-STATE TUITION	OUT-OF-STATE TUITION	ROOM & BOARD	FINANCIAL AID & SCHOLARSHIPS	FINANCIAL AID FORMS NEEDED	TOTAL COST
CENTRAL MICHIGAN	\$13,200 For 30 credits in a school year. At \$440 per credit. All U.S. residents pay the same rate.	\$13,200 For 30 credits in a school year. At \$440 per credit. All U.S. residents pay the same rate.	\$11,248 For standard housing and all a la carte food at plan	Automatic consideration for merit awards. Competitive awards up to 100% tuition, room, and board require additional application cmich.edu/scholarships	FAFSA	cmich.edu/affordability
EASTERN MICHIGAN	\$14,555 All undergraduate students pay out of state tuition rate.	\$14,555 All undergraduate students pay out of state tuition rate.	\$11,200	Automatic consideration for merit awards. Competitive awards up to 100% tuition, room, and board require additional application cmich.edu/scholarships	FAFSA	cmich.edu/affordability
FERRIS	\$13,076 North American Tuition Rate	\$21,420 International Tuition Rate	\$10,268	Automatic consideration/TP Phase 1 & 2	FAFSA	ferris.edu/admissions/financial-aid
GRAND VALLEY	\$13,952	\$19,856	\$9,700	Must be submitted by March 1, 2023 for scholarship consideration. Updated documents accepted until July 31, 2023 for scholarship consideration	FAFSA	www.gvsu.edu/financial-aid
LAKE SUPERIOR STATE	\$13,440 Worldwide "One Rate" tuition	\$13,440 Worldwide "One Rate" tuition	\$11,016	Automatic consideration/TP Phase 1 & 2	FAFSA	lsu.edu/financial-aid
MICHIGAN STATE	\$15,436	\$42,022	\$10,990	Automatic consideration	FAFSA	admissions.msu.edu/cost-aid/
MICHIGAN TECH	\$17,296	\$39,256	\$12,058	Automatic consideration	FAFSA	mtu.edu/admissions/tuition
NORTHERN MICHIGAN	\$12,648	\$18,144	\$11,910	Automatic consideration; competitive TP phase 1 & 2	FAFSA	www.nmich.edu/tuition
OAKLAND	\$14,476	\$23,730	\$10,852	Automatic consideration/FAFSA; 2023 plan by 1/15/23	FAFSA	oakland.edu/financial-aid
SAGINAW VALLEY	\$10,800	\$25,380	\$11,400	Automatic consideration	FAFSA	saginaw.edu/financial-aid
U-M ANN ARBOR	\$16,404	\$55,002	\$13,170	Free tuition U-\$80K income and -\$50K assets; Scholarships: automatic consideration; suggested filing date: Dec 15	FAFSA and CSS PROFILE	financial.umich.edu/financial-aid/
U-M DEARBORN	\$14,320	\$29,584	Modern, private housing with apartment in campus	Free tuition for students with a GPA of 3.5+, family income < \$25K and assets < \$25K. Other merit and need based scholarships are available; automatic consideration, priority filing date: Dec 1	FAFSA	umdearborn.edu/financial-aid
U-M FLINT	\$13,008	\$25,224	\$9,823	Free tuition for students with a GPA of 3.5+, family income < \$25K and assets < \$25K. Other merit and need based scholarships are available; SAT or ACT scores are recommended, but not required.	FAFSA	umflint.edu/financial-aid/
WAYNE STATE	\$14,464	\$30,914	\$11,321	Automatic consideration	FAFSA	wayne.edu/tuition
WESTERN MICHIGAN	\$13,850	\$17,313	\$10,989	Automatic consideration; apply by 12/15 EA deadline. FAFSA submission by 1/15. Forms received after 3/1 considered on rolling basis. See "Application Deadlines" section for more information.	FAFSA	www.wmich.edu/registration